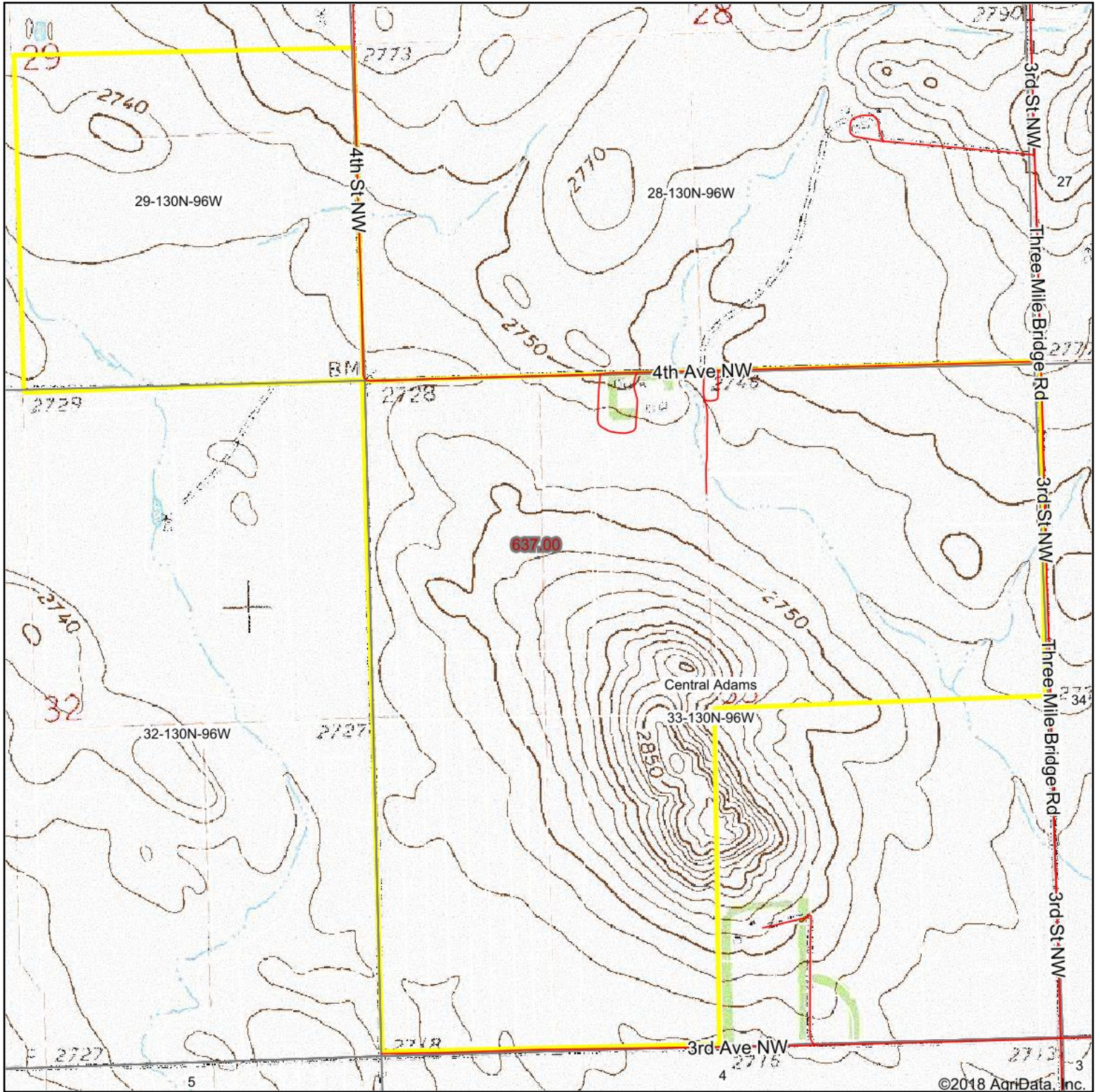


Topography Map



LESH & COMPANY
REAL ESTATE

Maps Provided By:
surety
CUSTOMIZED ONLINE MAPPING
© AgriData, Inc. 2018 www.AgrIDataInc.com

map center: 46° 2' 33.96, -102° 41' 58.1

0ft 1214ft 2428ft

33-130N-96W
Adams County
North Dakota



10/15/2018